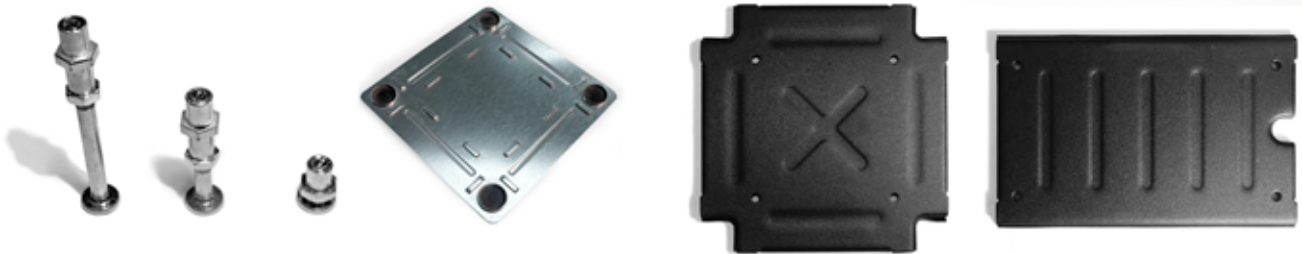
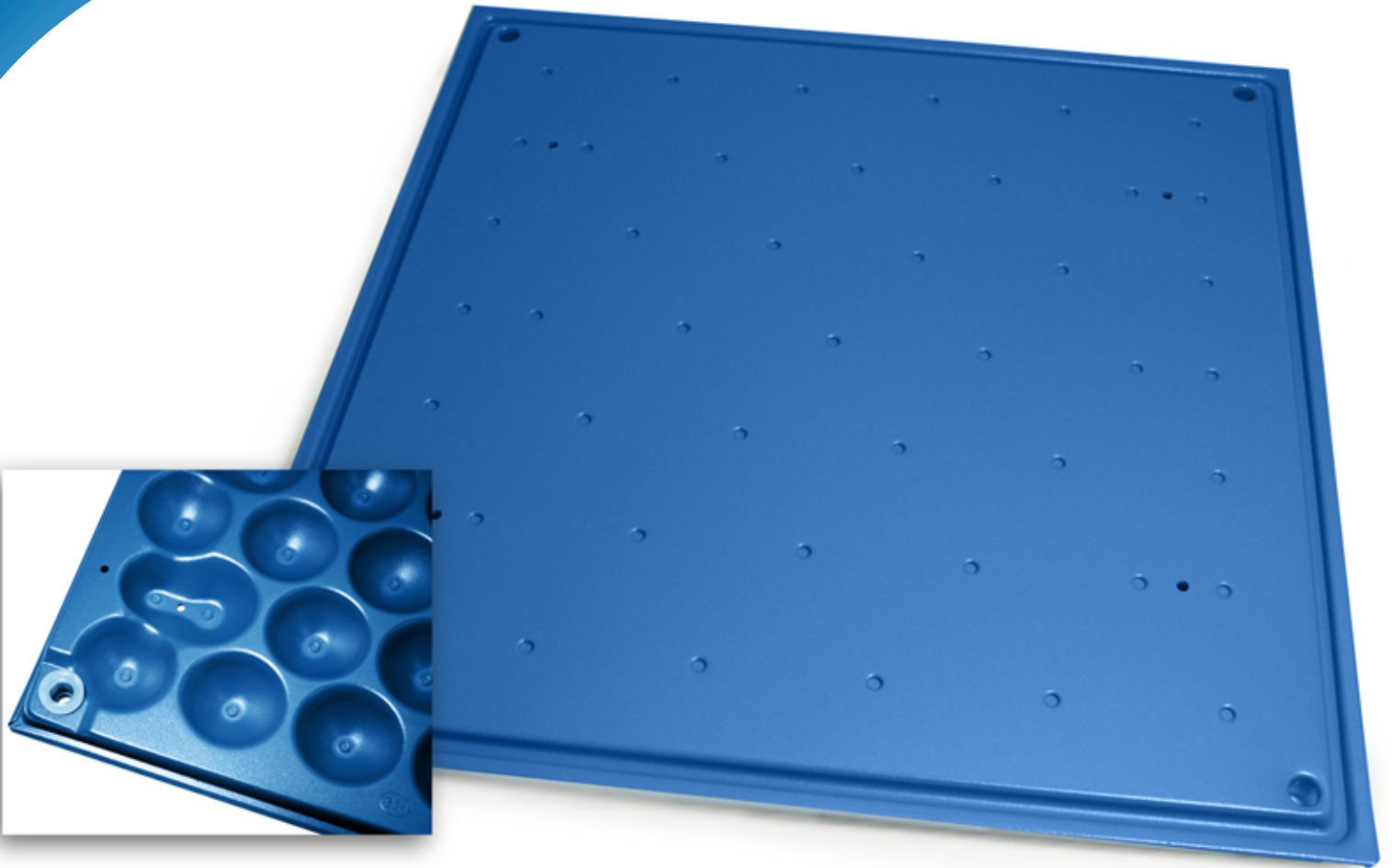


EN Floor[®]

ACCESS FLOORING SYSTEMS



9: G!\$&
Channel System Raised Floor

◆ **EFS-02**

- Symmetrical concave design distributes loads evenly
- Cross - section view of the grooved channel lock
- Grooved channel section with pedestal and base plate assembly

◆ **EFS-02** is a cementitious filled steel multi-channel cable management system. It is height adjustable from 35mm to 150mm, or 1.4 to 5.9 inches

◆ **Construction**

- EFS-02 panel system is made of high quality steel plates which are press-formed and filled with bubble cement, then sprayed with a powder coat epoxy finish
- Zinc-plated height-adjustable pedestals are self locking and range in height from 35mm to 150mm
- Grooved channels interlock and keep components in place
- Symmetrical concave design distributes loads evenly

◆ **Features**

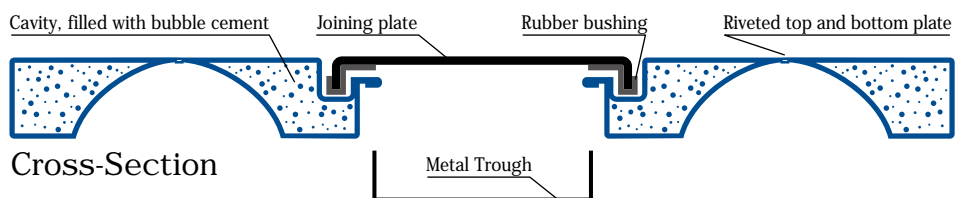
- Height adjustable from 35mm to 150mm or 1.4 to 5.9 inches
- Quick connect channel system
- Organized channels for high volume cable management
- Panels and components are interchangeable with EFS-01 (OAMK) system

◆ **Benefits**

- Lowest profile height adjustable system available in the market
- Save time and expense for facility re-configurations
- Eliminate electrified furnishings, save costs on moves or changes, improved esthetics
- LEED Credits, reusable
- cULus listed, Green Spec listed

◆ **Applications**

The EFS - 01, 02 and 03 series access flooring systems are designed for a multitude of applications - not just office space! With over 25 million square feet installed world-wide, ENFloor has been used in environments such as casinos, office buildings, telecommunications, news and media rooms, government buildings, retail, call centers, financial institutions, educational institutions and training centers.



Name	Size	Concentrated Load Capacity (Deflection <=2mm)			Uniform Load Capacity (N/m ²)	Extreme Load Capacity (N)
		1b	N	kg		
EFS - 02 Channel System Raised Floor	Panel: 500 x 500 x 25 mm	680	3040	300	12500	8850 (2,000 lb)
	Combination Specification: 600 x 600 x 25 mm	800	3550	360	17500	10700 (2,400 b)
		1000	4450	450	23000	13350 (3000 lb)
		1250	5560	568	33000	16680 (3,750 b)
	Wide Channel: 260 mm	450	1980	200	1000	5900 (1,325 lb)